

# Five senses

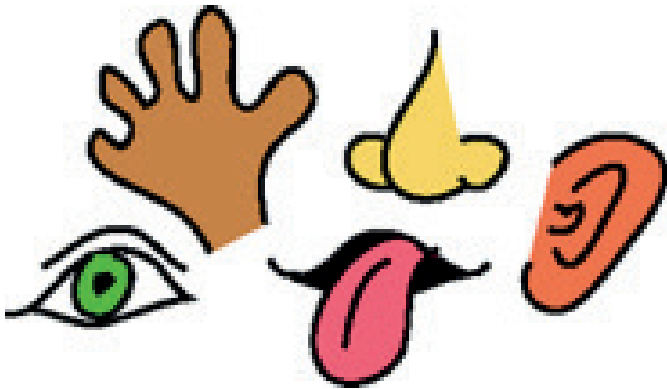
# QUIZ



St Oswald's  
Hospice

## 1. Humans can not perceive colour?

- a) Underwater
- b) In bright moonlight
- c) In outer space
- d) When one eye is covered



## 2. What is Anton's syndrome?

- a) A syndrome characterised by lack of depth perception
- b) A syndrome characterised by the ability to see in black and white
- c) A syndrome characterised by a person's complete blindness and their conviction that they can see
- d) A syndrome characterised by the ability to see shapes clearly but the inability to identify them

## 3. Which of the following creatures cannot move its eyes?

- a) Rabbit
- b) Owl
- c) Chimpanzee
- d) Starling

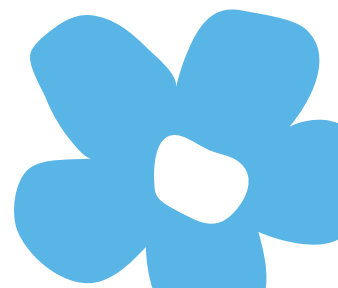
## 4. If a two-person conversation measures 60 decibels, a vacuum cleaner measures 80, what is the decibel level of normal breathing?

- a) 0
- b) 10
- c) 25
- d) 40



## 5. Which animal can see between its open jaws?

- a) Rabbit
- b) Owl
- c) Chimpanzee
- d) Starling



**6. What is the decibel level of a jet plane taking off?**

- a) 90
- b) 140
- c) 450
- d) 1000



**9. Which of the following body parts is the most sensitive to touch?**

- a) Back
- b) Stomach
- c) Lips
- d) Fingertips

**7. Of the following, which would be the most difficult to vividly conjure up in the imagination (for most, if not all people)?**

- a) The smell of coffee
- b) The colour red
- c) The feel of velvet
- d) The taste of a lemon

**8. Which taste cannot be detected by the tip of your tongue?**

- a) Bitter
- b) Salty
- c) Sweet
- d) Sour

**10. On which part of your tongue do you taste sweet foods?**

- a) The front
- b) The sides
- c) The backs



# Five senses QUIZ

## Answers

**1. Humans can not perceive colour?**

b) In bright moonlight

**2. What is Anton's syndrome?**

c) A syndrome characterised by a person's complete blindness and their conviction that they can see

**3. Which of the following creatures cannot move its eyes?**

b) Owl

**4. If a two-person conversation measures 60 decibels, a vacuum cleaner measures 80, what is the decibel level of normal breathing?**

b) 10

**5. Which animal can see between its open jaws?**

d) Starling

**6. What is the decibel level of a jet plane taking off?**

b) 140

**7. Of the following, which would be the most difficult to vividly conjure up in the imagination (for most, if not all people)?**

a) The smell of coffee

**8. Which taste cannot be detected by the tip of your tongue?**

d) Sour

**9. Which of the following body parts is the most sensitive to touch?**

c) Lips

**10. On which part of your tongue do you taste sweet foods?**

a) The front

